

T Y P E  
B



PRIVADO  
MADINATY

A TMG DEVELOPMENT

# Building Type B







Privado Madinaty



# Type B Ground Floor



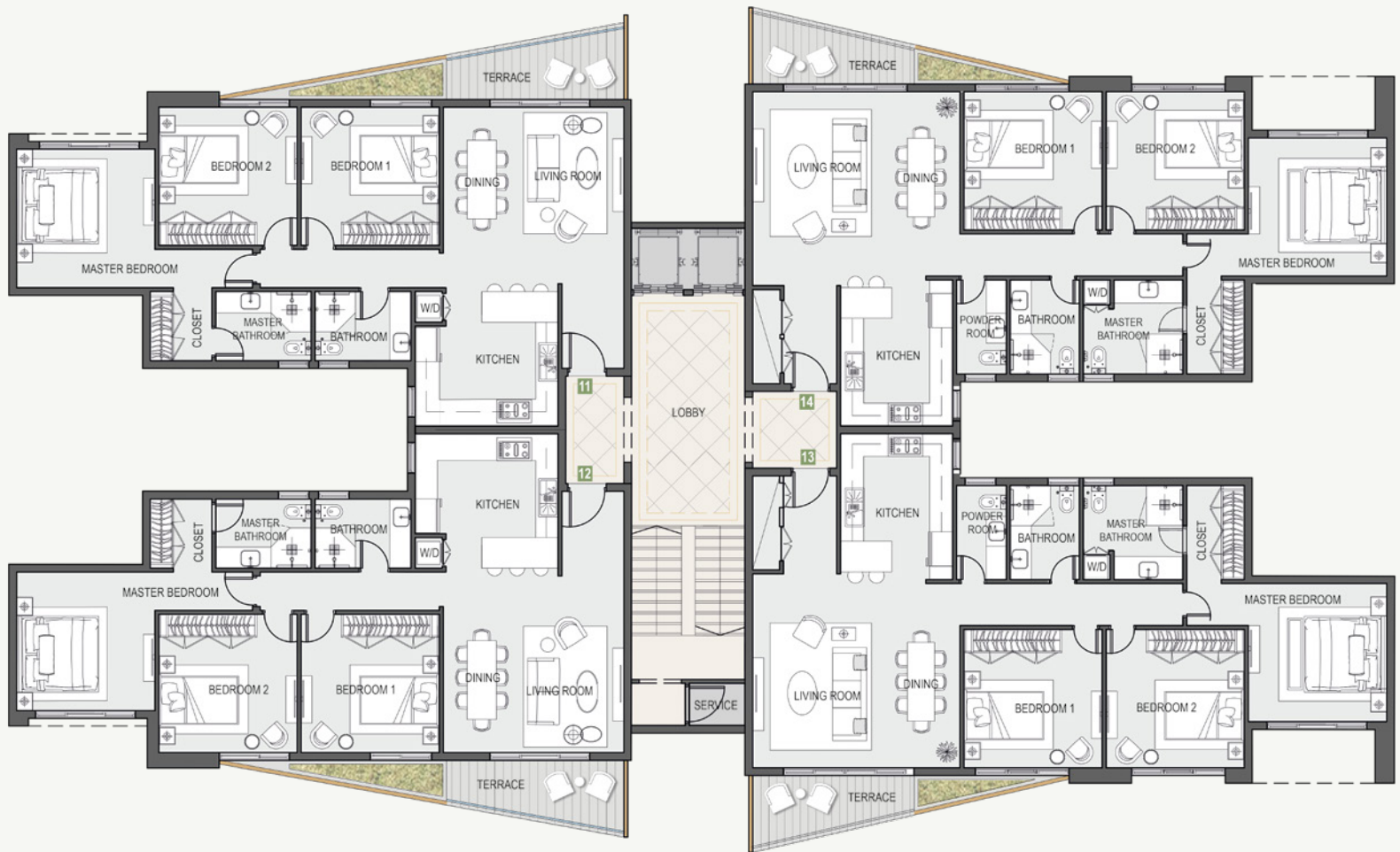
<b>Unit 1</b>		
<b>Total Unit Area</b>	<b>95 m<sup>2</sup></b>	
ENTRANCE	1.7 x 1.3 m	
LIVING ROOM/ DINING	4.6 x 4.9 m	
TERRACE	4.6 x 1.6 m	
KITCHEN	2.9 x 2.0 m	
BEDROOM 1	3.8 x 3.8 m	
CLOSET	1.6 x 2.0 m	
BEDROOM 2	3.7 x 3.8 m	
BATHROOM 1	2.4 x 2.0 m	
BATHROOM 2	1.7 x 2.4 m	

<b>Unit 2</b>		
<b>Total Unit Area</b>	<b>130 m<sup>2</sup></b>	
ENTRANCE	1.8 x 1.8 m	
LIVING ROOM/ DINING	4.8 x 4.9 m	
TERRACE	5.0 x 1.6 m	
KITCHEN	3.8 x 3.7 m	
MASTER BEDROOM	3.8 x 3.8 m	
CLOSET	1.8 x 2.0 m	
MASTER BATHROOM	2.6 x 2.0 m	
BEDROOM 1	3.7 x 3.7 m	
BEDROOM 2	3.7 x 3.7 m	
BATHROOM	2.6 x 2.0 m	

<b>Unit 3</b>		
<b>Total Unit Area</b>	<b>144 m<sup>2</sup></b>	
ENTRANCE	2.3 x 2.2 m	
LIVING ROOM/ DINING	5.5 x 5.0 m	
TERRACE	5.6 x 1.6 m	
POWDER ROOM	1.4 x 2.6 m	
KITCHEN	3.0 x 3.9 m	
MASTER BEDROOM	3.8 x 3.8 m	
CLOSET	1.7 x 2.6 m	
MASTER BATHROOM	2.7 x 2.6 m	
BEDROOM 1	3.7 x 3.8 m	
BEDROOM 2	3.7 x 3.8 m	
BATHROOM	1.9 x 2.6 m	

<b>Unit 4</b>		
<b>Total Unit Area</b>	<b>146 m<sup>2</sup></b>	
ENTRANCE	2.3 x 3.2 m	
LIVING ROOM/ DINING	5.5 x 5.0 m	
TERRACE	5.5 x 1.6 m	
POWDER ROOM	1.4 x 2.6 m	
KITCHEN	3.0 x 4.0 m	
MASTER BEDROOM	3.8 x 3.8 m	
CLOSET	1.7 x 2.6 m	
MASTER BATHROOM	2.7 x 2.6 m	
BEDROOM 1	3.7 x 3.8 m	
BEDROOM 2	3.7 x 3.8 m	
BATHROOM	1.9 x 2.6 m	

# Type B Typical Floor





**Unit 11/ 21/ 31/ 41**

<b>Total Unit Area</b>	<b>133 m<sup>2</sup></b>
ENTRANCE	1.8 x 2.3 m
LIVING ROOM/ DINING	4.8 x 4.9 m
TERRACE	7.6 m <sup>2</sup>
KITCHEN	3.8 x 3.7 m
MASTER BEDROOM	3.8 x 3.8 m
CLOSET	1.8 x 2.0 m
MASTER BATHROOM	2.6 x 2.0 m
BEDROOM 1	3.7 x 3.7 m
BEDROOM 2	3.7 x 3.7 m
BATHROOM	2.6 x 2.0 m

**Unit 12/ 22/ 32/ 42**

<b>Total Unit Area</b>	<b>133 m<sup>2</sup></b>
ENTRANCE	1.8 x 2.3 m
LIVING ROOM/ DINING	4.8 x 4.9 m
TERRACE	7.6 m <sup>2</sup>
KITCHEN	3.8 x 3.7 m
MASTER BEDROOM	3.8 x 3.8 m
CLOSET	1.8 x 2.0 m
MASTER BATHROOM	2.6 x 2.0 m
BEDROOM 1	3.7 x 3.7 m
BEDROOM 2	3.7 x 3.7 m
BATHROOM	2.6 x 2.0 m

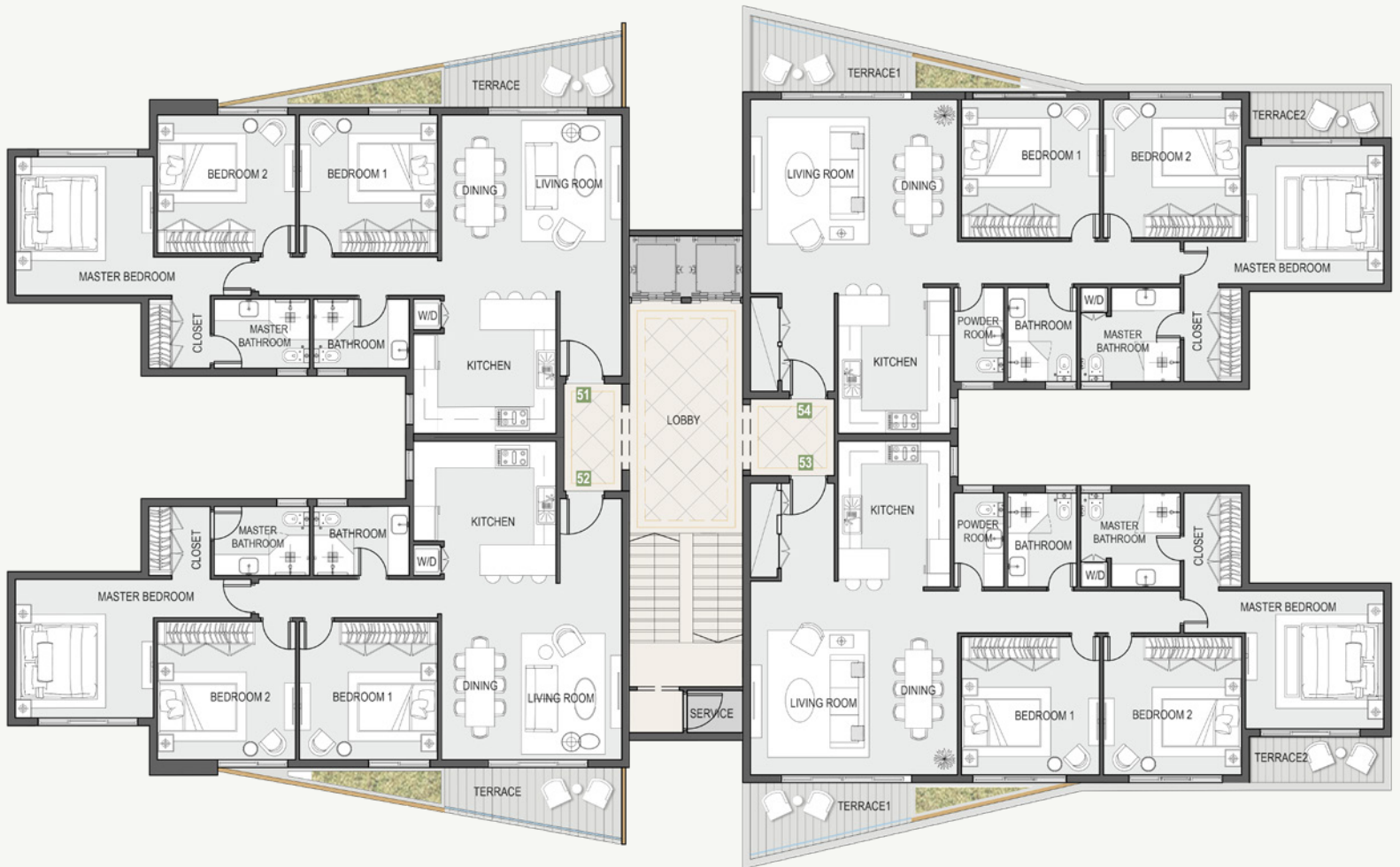
**Unit 13/ 23/ 33/ 43**

<b>Total Unit Area</b>	<b>146 m<sup>2</sup></b>
ENTRANCE	2.3 x 2.7 m
LIVING ROOM/ DINING	5.5 x 5.0 m
TERRACE	6.7 m <sup>2</sup>
POWDER ROOM	1.4 x 2.6 m
KITCHEN	3.0 x 3.9 m
MASTER BEDROOM	3.8 x 3.8 m
CLOSET	1.7 x 2.6 m
MASTER BATHROOM	2.7 x 2.6 m
BEDROOM 1	3.7 x 3.8 m
BEDROOM 2	3.7 x 3.8 m
BATHROOM	1.9 x 2.6 m

**Unit 14/ 24/ 34/ 44**

<b>Total Unit Area</b>	<b>146 m<sup>2</sup></b>
ENTRANCE	2.3 x 2.7 m
LIVING ROOM/ DINING	5.5 x 5.0 m
TERRACE	6.7 m <sup>2</sup>
POWDER ROOM	1.4 x 2.6 m
KITCHEN	3.0 x 3.9 m
MASTER BEDROOM	3.8 x 3.8 m
CLOSET	1.7 x 2.6 m
MASTER BATHROOM	2.7 x 2.6 m
BEDROOM 1	3.7 x 3.8 m
BEDROOM 2	3.7 x 3.8 m
BATHROOM	1.9 x 2.6 m

# Type B Fifth Floor



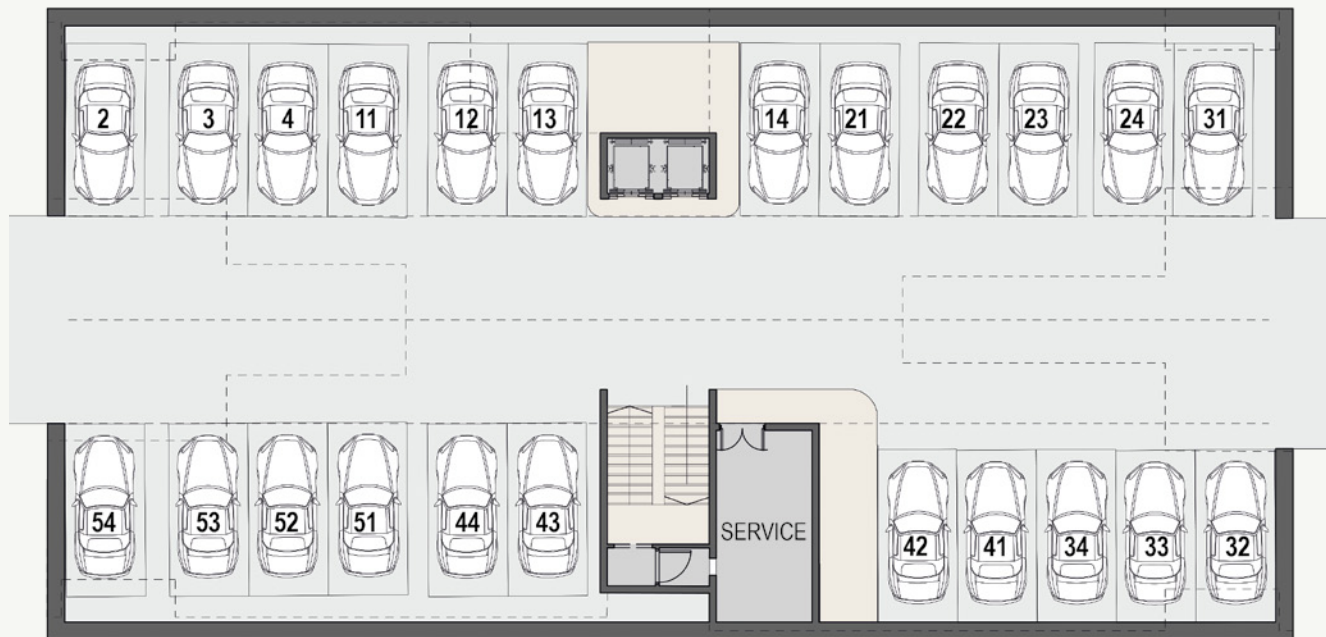
<b>Unit 51</b>	
<b>Total Unit Area</b>	<b>133 m<sup>2</sup></b>
ENTRANCE	1.8 x 2.3 m
LIVING ROOM/ DINING	4.8 x 4.9 m
TERRACE	7.6 m <sup>2</sup>
KITCHEN	3.8 x 3.7 m
MASTER BEDROOM	3.8 x 3.8 m
CLOSET	1.8 x 2.0 m
MASTER BATHROOM	2.6 x 2.0 m
BEDROOM 1	3.7 x 3.7 m
BEDROOM 2	3.7 x 3.7 m
BATHROOM	2.6 x 2.0 m

<b>Unit 52</b>	
<b>Total Unit Area</b>	<b>133 m<sup>2</sup></b>
ENTRANCE	1.8 x 2.3 m
LIVING ROOM/ DINING	4.8 x 4.9 m
TERRACE	7.6 m <sup>2</sup>
KITCHEN	3.8 x 3.7 m
MASTER BEDROOM	3.8 x 3.8 m
CLOSET	1.8 x 2.0 m
MASTER BATHROOM	2.6 x 2.0 m
BEDROOM 1	3.7 x 3.7 m
BEDROOM 2	3.7 x 3.7 m
BATHROOM	2.6 x 2.0 m

<b>Unit 53</b>	
<b>Total Unit Area</b>	<b>155 m<sup>2</sup></b>
ENTRANCE	2.3 x 2.7 m
LIVING ROOM/ DINING	5.5 x 5.0 m
TERRACE 1	10.9m <sup>2</sup>
POWDER ROOM	1.4 x 2.6 m
KITCHEN	3.0 x 3.9 m
MASTER BEDROOM	3.8 x 3.8 m
CLOSET	1.7 x 2.6 m
MASTER BATHROOM	2.7 x 2.6 m
TERRACE 2	4.4 m <sup>2</sup>
BEDROOM 1	3.7 x 3.8 m
BEDROOM 2	3.7 x 3.8 m
BATHROOM	1.9 x 2.6 m

<b>Unit 54</b>	
<b>Total Unit Area</b>	<b>155 m<sup>2</sup></b>
ENTRANCE	2.3 x 2.7 m
LIVING ROOM/ DINING	5.5 x 5.0 m
TERRACE 1	10.9m <sup>2</sup>
POWDER ROOM	1.4 x 2.6 m
KITCHEN	3.0 x 3.9 m
MASTER BEDROOM	3.8 x 3.8 m
CLOSET	1.7 x 2.6 m
MASTER BATHROOM	2.7 x 2.6 m
TERRACE 2	4.4 m <sup>2</sup>
BEDROOM 1	3.7 x 3.8 m
BEDROOM 2	3.7 x 3.8 m
BATHROOM	1.9 x 2.6 m

## Type B Basement Floor



---

### **Disclaimer:**

1. Rooms' measurements are from the centerline of walls and the unit total area includes external walls thickness and its share from the public areas.
2. Diagrams are not to scale and are for illustrative purposes only.
3. All finishes, furniture and fences shown in the accompanying renderings are for illustrative purposes only.
4. All landscaping visuals are for illustrative purposes only and are not included in the property.
5. Location of the basement floors entrance and exit ramps are subject to change as per the buildings locations on the master plan.
6. All renderings and other visual materials, designs, façades are for demonstrative purposes only and are subject to change.

# Finishing Specification

## Reception, Lounge & Dining

Flooring: Local marble or high quality porcelain tiles

Walls: Washable Water-based paints

Ceiling: Washable Water-based paints

## Bathrooms & Kitchens

Flooring: High quality ceramic tiles

Walls: High quality ceramic tiles (full height)

Ceiling: Washable Water-based paints

Sanitary Fixtures: Ideal Standard or Duravit

*(sanitary fixtures set up is for guidance only)*

## Bedrooms

Flooring: Imported high quality HDF flooring

Walls: Washable Water-based paints

Ceiling: Washable Water-based paints

## Facades

Weather resistant paints

*(colors may slightly change during construction)*

## Building Entrance

Flooring: Local marble or high quality porcelain tiles

Walls: Local marble or high quality porcelain tiles

Ceiling: Washable Water-based paints

## Stairs

Flooring: Local marble tiles

Stairs Ceiling & Walls: Washable Water-based paints

## Terraces

Flooring: Local marble or high quality porcelain tiles

Walls & Ceiling: Weather resistant paints

Balustrade: Tempered glass

## Doors

5 cm thickness HPL doors & high quality hardware

## External Windows

Aluminium profiles and double glazing

## Electrical Wiring

All wiring and accessories are high quality local materials

## Air Conditioning (Optional)

Centralized air condition



# PRIVADO Timeless Elegance





